

KAYU[®] HARDWOOD DECK TILES INSTALLATION PROCESS

Materials

- Handsaw or jigsaw, if needed to cut any tiles to fit remaining gaps or corners.
- Utility knife.
- Chalk to draw a straight line to follow during installation.

Design Your Deck

- Sketch on paper or physically place the tiles in position on the space that you plan on covering, before you start.

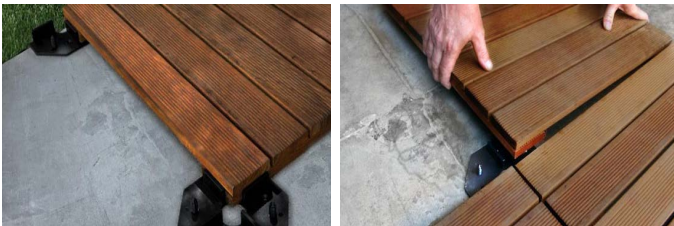


Step #1 - Prepare the Surface Deck

- Make sure the surface being covered is flat with no large cracks, bumps or slumps which could cause the tiles to lie unevenly or sway on the surface.
- Remove any items such as rocks or sticks from the area.
- For hard dirt surfaces, sand or gravel, the surface should first be leveled, well compacted and covered with a weed control barrier.

Step #2 - Click the Tiles in Place

- The wood-backed deck tiles are milled with four pre-drilled holes located in each corner. The DeckWise[®] Hardwood Deck Tile Connectors fit each of these holes with four specially designed ribbed pins. For a secure fit, simply set one of the tiles onto the preinstalled fasteners.



- After positioning the first tile in the corner of your workspace, proceed by placing the other tiles onto the remaining pins. By Design the deck tile connector sets the gap spacing to 3/8" for an even appearance.

Step #3 - Finishing Touches

- For corners and edges, cut the connector with a utility knife along the pre-molded score lines that mark the edges of the built in spacers. Bend the edges downward to snap the connector in half. Repeat the same process to use a quarter of the connector to install on the corners of your deck tiles. As a safety measure, always cut in the direction away from your body and hands.
- With the last row of tiles, you may need to cut some tiles to fit any remaining gap. Cut with a handsaw, jigsaw or power saw, taking care the saw does not contact any of the screws in the base of the tile.

