

Kayu® International, Inc. was founded in 1994 and is one of the world's largest serving Direct Importers of the finest Tropical Hardwood for the U.S. and Canadian markets; providing decades of High Quality Hardwood, Dependable Service at Affordable Prices.

Kayu® Legendary Performance™

At Kayu® we offer only a few carefully chosen select species and are extremely meticulous when sourcing; careful of who we use as manufacturers and ensure quality control by having our own exclusive graders, inspecting every board.

Our Tropical Hardwood includes the very best hardwood species available, anywhere. Exotically gorgeous, exceptionally durable and sustainable harvested. Compared to other commonly used woods, Kayu® is much superior in the vast majority of cases and in all comparisons we know of; outlasting and outperforming other materials. Our guideline here is to further enhance your Kayu® ceiling appearance and performance for decades of enjoyment.



Fundamental Guidelines

We've outlined some fundamental guidelines to assist you with the process of installing your ceiling, being mindful that many construction / installation details often vary from build to build.

All wood is subject to expansion and contraction as the moisture in the environment surrounding the wood changes. KAYU® hardwood is skillfully kiln-dried, board to board, resulting in highly consistent moisture content. Shrinkage is very limited, unlike air-dried boards.



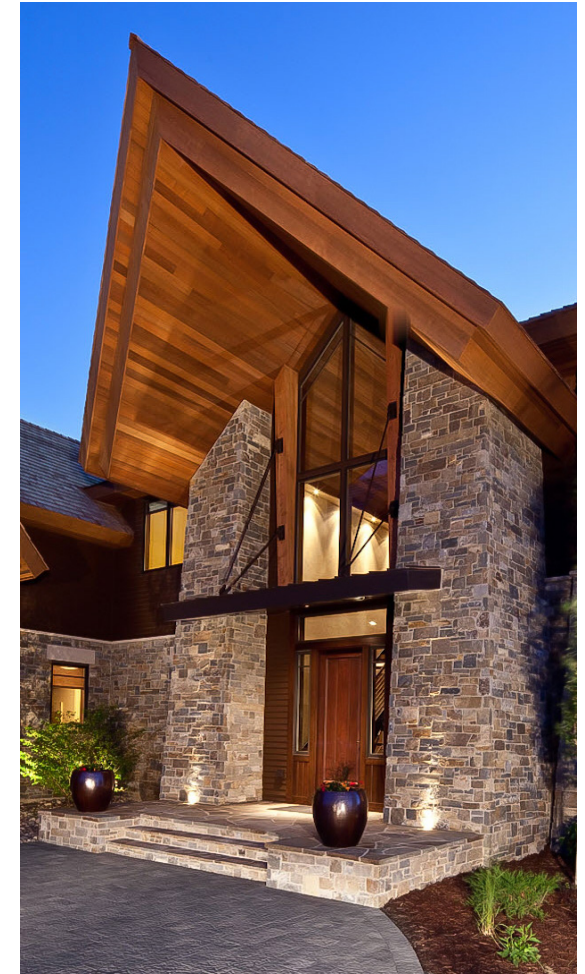
KAYU® is a registered trademark of KAYU International, Inc. in the United States and KAYU® is a trademark of KAYU International, Inc. in other countries.



Unauthorized use is strictly prohibited
Copyright ©2025 KAYU® International, Inc.
All Rights Reserved • 3071.07



Legendary Performance™



KAYU®-TONGUE & GROOVE™ HARDWOOD CEILING INSTALLATION FUNDAMENTALS

The look of a New Generation, The Feel of Tradition,
Build with KAYU®

100% NATURAL BEAUTY

JUST AS NATURE INTENDED



STORAGE AND HANDLING

Before installation and finishing, keep your KAYU® kiln-dried boards clean, dry and out of direct sunlight. Acclimate to your project site by dry-storing 2 weeks prior to installation. Do not store boards directly on the ground. Be sure the bottom boards are well ventilated by placing the boards at least 4" off the ground and on top of blocks. Do not cover boards with plastic or tarp during the acclimation period, this will trap moisture and cause stability issues. Place a sheet of plywood on the top of the pile to shed any water. Do not store the boards in a fully enclosed area and open windows.

Essential. If you store in an enclosed area, be sure it's not heated and open a door or window facilitating healthy air flow perfectly stabilizing your premium product to your local ambient air moisture content. please understand, all wood from anywhere should be treated this way, maximizing your products performance. Just a bit more care at this stage, will assure your ceiling performance among the very best of any similar product, for decades. Now, please do not allow your material to later be rained on or lawn sprinkled just before installing.

SEALING /FINISHING

Prior to installation, seal the boards with a high-quality penetrating oil sealer or paint on all four sides. Sealing only one side will create an unbalanced moisture flow on the face and back, which under severe conditions or if not properly fastened, may lead to slight cupping.

In order to bring back the original color of the wood, a periodic cleaning and a new coat of finish will be necessary. The rate at which maintenance is needed depends largely on; the degree of exposure to direct sunlight, climatic conditions, preference of wood color and the frequency at which any preservative treatments are applied. We hear most often that an oiled Kayu® ceiling is re-oiled every 8-10 years.

Similar to all wood products, with time, KAYU® Hardwood will gradually fade to a silver-gray patina color. If this is preferred, finish all four sides with a natural unpigmented finish and allow to weather naturally. In this state, maintenance will be as minimal and easy as any other ceiling product on the market.

SPAN

The end of each board must be adequately supported by a framing member. Install on a maximum framing member spacing of 16" when boards are installed at a 90 degree angle to the joists. When installing on an angle, framing member spacing should be on 12" centers. For best ceiling appearance and strength, end butted joints should be staggered to prevent direct alignment of the ends.

SPACING

KAYU® Hardwood is skillfully kiln-dried for consistent application, board to board, using a highly sophisticated process of computer and operator controlled heat and humidity to adjust and regulate the drying of the lumber. Excessive moisture will cause the boards to expand slightly. Unlike air dried boards, shrinkage is very limited. Please refer to our website resource pdf. about why kiln-dried wood is far superior to air-dried.

Build leaving a 1/2" to 3/4" expansion space at the wall of the house and use trim board to cover. This expansion space only needs to be on the two sides, allowing the boards to expand side by side. Our product does not expand or contract length wise (unlike composite), therefore neatly trim ends and butt together.

SOFFIT

When KAYU®-Batu™ Tongue & Groove is being installed as a Soffit, we highly recommend a polyurethane adhesive in addition to fasteners due to the weight of the hardwood. Note: this step is not necessary with our KAYU®- Borneo Mahogany™ product which is the same as Douglas Fir.

VENTILATION

Allowing adequate ventilation is extremely important for proper air flow to reduce the potential for cupping and surface checking. In high moisture areas, it is imperative to leave an expansion space; allowing the wood to expand and contract. In high moisture areas do not install the boards tight, leave a 1/32" expansion space between each board.

Moisture underneath a non-ventilated fixture will be absorbed by the bottom side of the board while the sun and wind will dry the top side of the board. This unequal moisture content may cause cupping.

Sheathing/House Wrap. Using a breathable building paper, apply wrap to the wall as per specifications. Wrapping stops moisture from getting into the framing or insulation; damaging the internal linings, or seeping lower into the building.

In horizontal application, start at the bottom and work up with the groove edges facing downwards. Boards should be face screwed using two screws per piece. screws must penetrate 1-1/2" into solid wood.

In vertical application, start at one corner with grooved edge toward the adjacent wall. Use a construction lever to ensure that the first board is level. The grooved edge of the first board may have to be trimmed to ensure a flush fit. The board is screwed to horizontal blocking lines installed between studs or to furring strips.

Build leaving a 1/2" to 3/4" expansion space at the wall of the house and use trim board to cover. This expansion space only needs to be on two sides, allowing the boards to expand side by side. Our product does not expand or contract length wise.

FASTENING

Pilot holes are recommended to prevent splitting, especially on the end of the board. Stainless Steel Screws are the industry standard method of attachment for exterior applications with a minimum 1-1/2" penetration into the framing member. The screw must penetrate the framing member when face screwing, within 3/4" of the edge or end of the board. Smooth shank finish nails do not have the withdrawal resistance required for exterior applications due to the expansion and contraction of lumber that is exposed to outdoor elements.

DISCLAIMER

KAYU® hardwood products are carefully selected species and manufactured to ensure the finest quality. However, all natural wood is subject to some minor expansion and contraction as the moisture in the environment surrounding the wood changes through the seasons. Careful attention to our installation instructions will be important to long term performance and enjoyment.

Contact your local Building Inspection Department to ensure compliance of installation.